

Tricuiser Quick Start Guide

see owners manual for more in depth information. If any operations are beyond you, seek professional help

Open the 2 boxes and remove rear drive sub-assembly and main frame and parts



Lower stem into the fork, then tighten the wedge bolt. Loosen the handlebar bolt on the stem, rotate bar (straighten) then retighten



remove this chain by locating the master link and then removing it (see owners manual as needed)



Remove the 4 bolts



Then position rear assembly and main frame together



Then reattach the 4 bolts through the linked assemblies (loosely)



Reattach the chain you removed using the master link and take care to position it on the gears



slide the 2 assemblies in opposing directions to tighten the chain, then final tighten the 4 bolts holding the assemblies together

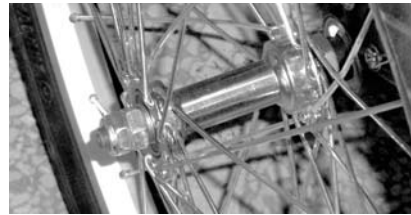
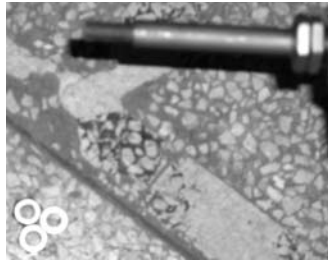


Identify LEFT side rear wheel by the "D" opening in the hub

Remove the 4 parts shown from the left axle and slide wheel into the channel, then reattach the removed parts and tighten well



Repeat this process for the RIGHT side rear wheel. This hub has a round hole



To attach the front wheel you may need to loosen the wire on the front brake so the tire and wheel can pass the brake blocks

Loosen the bolts on the front hub, slide into into the front fork ends, then retighten the bolts



Retighten the brake wire after attaching the front wheel. Test brake function by squeezing the lever. Brake pads should be about 0.5mm from the rim each side) see owners manual for details



Attach battery to plug



Attach pedals. Left pedal (not shown) has reverse threading, and is screwed in counter clockwise. Tighten well



Slide Saddle and seatpost into the seat tube, place at the height you like then flip lever cam to tightened position. (see Owners manual for more details on tightening and adjustment)



Remove bolt in fork, Slide front fender up, put bolt into position and tighten. Next remove screws on the fork ends and then position struts, next reattach bolts so struts are connected to the fork



Attach rear fender struts onto the rear assembly (right side shown). Struts face to the inside of the tricycle.



Remove the 4 bolts on the top of the rear drive assembly.



Unpack, unfold, and then slide the pins holding the rack together into position



Next reattach the 4 bolts so basket is mounted firmly on the rear assembly



Remove the 3 screws holding the side plate on the control box (this is on the left side of trike and under the battery)



Attach the cord coming from the motor to the matching connector in the control box. Then close the control box and tighten the 3 screws

At this point remove any final packing, turn on power switch and verify that the throttle lights illuminate. If so you should be ready to go. See owners manual for more details, riding tips, problem solving tips, etc.